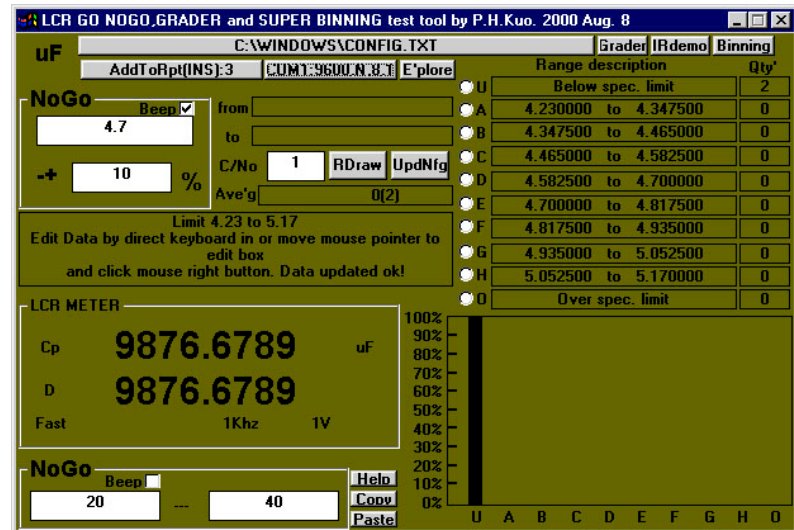


PeakTech 2150 LCR Meter



Selectable Test Frequencies; with opt. RS-232 C

This high accuracy LCR meter can perform the inductor, capacitor and resistor measurement up to 100 kHz within 0,2 % basic accuracy. It is the most advanced handheld AC/DC impedance measurement instrument to date. This Tester can help engineers and students to understand the characteristic of electronics components. It is also of great assistance to those people who want to do the quality control of the electronic components.

The instrument is auto or manual ranging. Test frequencies of 100/120 Hz/1/10/100 kHz may be selected on all applicable ranges. The test voltages of 50/0,25 or 1 Vrms (DCR only) may also be selected on all applicable ranges. The dual display (60 x 33 mm) feature permits simultaneous measurements.

Components can be measured in the series or parallel mode as desired; the more standard method is automatically selected first but can be overridden.

- DC Resistance measurement
- Rechargeable batteries, AC
- RS-232 C Interface (IrDA)
- For PC with Infrared Port
- Safety: TÜV/GS; IEC-1010-1; CAT III

Accessories: 2 x 1,2 V Ni-Mh rechargeable batteries, Manual, 6 V AC/DC Adaptor, shorting bar and carrying case

Optional Accessories: TK: 4-p. Testclips, SM-TK: SMD-Testprobe, KK: 4-p. Kelvin Clips, ISWA: Infrared Software Adaptor

Measuring functions

Z

absolute value of impedancet

L

Inductance

C

Capacitance

DCR

Direct current resistance

ESR

equivalent series resitance

D

Dissipaton factor

Q

Quality factor

θ

Phase angle

Z,L,C and ESR

Accuracy (Ae)

Test-frequency

DCR 120 Hz

20 M Ω - 10 M Ω : 2% \pm 1*

10 M Ω - 1 M Ω : 1% \pm 1

1 M Ω - 100 k Ω : 0,5% \pm 1

100 k Ω - 10 Ω : 0,2% \pm 1

10 Ω - 1 Ω : 0,5% \pm 1

1 Ω - 0,1 Ω : 1% \pm 1

DCR 10 kHz

20 M Ω - 10 M Ω : 5% \pm 1*

10 M Ω - 1 M Ω : 2% \pm 1

DCR 100 kHz

20 M Ω - 10 M Ω : NA

10 M Ω - 1 M Ω : 5% \pm 1*

1 M Ω - 100 k Ω : 2% \pm 1

100 k Ω - 10 Ω : 0,4% \pm 1

10 Ω - 1 Ω : 2% \pm 1

1 Ω - 0,1 Ω : 5 % \pm 1*

* Remark: Ae is not specified in the test, level is set to 50 mV

ISI, L, C and ESR accuracy applies when Dx (measured D-value) < 0,1

Combinations

Serial Mode: Z- θ , Cs-D, Cs-Q, Cs-ESR, Ls-D, Ls-Q, Ls-ESR

Parallel Mode: Cp-D, Cp-Q, Lp-D, Lp-Q

Ranging

auto or manuell

Relative

Relative mode

Calibration

Open/Short calibration

RS-232 C interface

IrDa (Infrared)

Transmission signal

Tx and Rx

Flow control

X ON/X OFF

Output impedance

100 $\Omega \pm 5 \%$

Display range

Z: 0,001 Ω ...9999 M Ω

L: 0,001 μ H...9999 H

C: 0,001pF...9999F

DCR: 0,001 Ω ...9999M Ω

ESR: 0,001 Ω ... 9999 Ω

D: 0,001 ... 9999

Q: 0,001 ... 9999

θ : -180° ... +180°

Measuring speed

slow: 2,5 x per Sec.; fast: 4,5 x per Sec.

Operating voltage

110/220 V, 50/60 Hz over AC-Adaptor

Dimensions (WxHxD)

86 x 174 x 48 mm

Weight

470 g